

# AUTO-DARKENING WELDING HELMET

---

## User Manual



1、 Product Characteristics	-----2
2、 User Manual	-----2
3、 Picture Introduction	-----3
4、 Technical Parameters	-----4
5、 Matters Attention	-----5
6、 Product Maintenance	-----5
7、 Product Diagram	-----5

# 1. Product Characteristics

- 1). High strong materials and fire retardant, can prevent resistance ,anti-aging
- 2). High definition protective filter,you can see the welding conditions clearly when welding the goods. Welding luminosity is soft and comfortable.
- 3). It works the moment you start work,this products adopts advanced circuit design. Striking the arc,the observing window darkens immediately.
- 4). Permanent UV/ IR protection
- 5). Fashion appearance,ultra light designing,wearing comfortable.
- 6). High performance solar cells and lithium battery
- 7). Sensitivity and delay time can be adjustable.
- 8). Grinding and welding mode can be chosen.
- 9).Ultra-low power consumption, Battery replaceable, Self-checking function, Low battery display
- 10). Segmented shade adjustment switch(DIN5-9 and DIN9-13)

# 2. User Manual

- 1). The welding helmet is suitable for all types of the electro-weldings:arc welding , gas shielded welding, etc. except laser welding.
- 2). Before using,please move the protective film away from the screening glass, which located front and back of the lens.
- 3). Shading Adjustment:
  - the adjustment knob on the left side of the auto helmet(refer to the picture introduction)
  - Open the switch,adjust the button,according to the electric circuit to choose the suitable shading No.
- 4). Sensitivity Adjustment :
  - the adjustment knob on the upper-left of the LCD core box (refer to the picture introduction)
  - Namely the response time:from the light shade to the dark shade.By adjusting the button "Sensitivity"to change the sensitivity which receiving the signal of the electric welding light.you can adjust a little higher when the welding current is low.
- 5). Delay time adjustment :
  - the Knob locate on the upper-right of the auto helmet (refer to the picture introduction)

- Namely the response time:from the dark shade to the light shade,By adjusting the button "Delay "to change the delay time of the lens.

6). Headband adjustment :

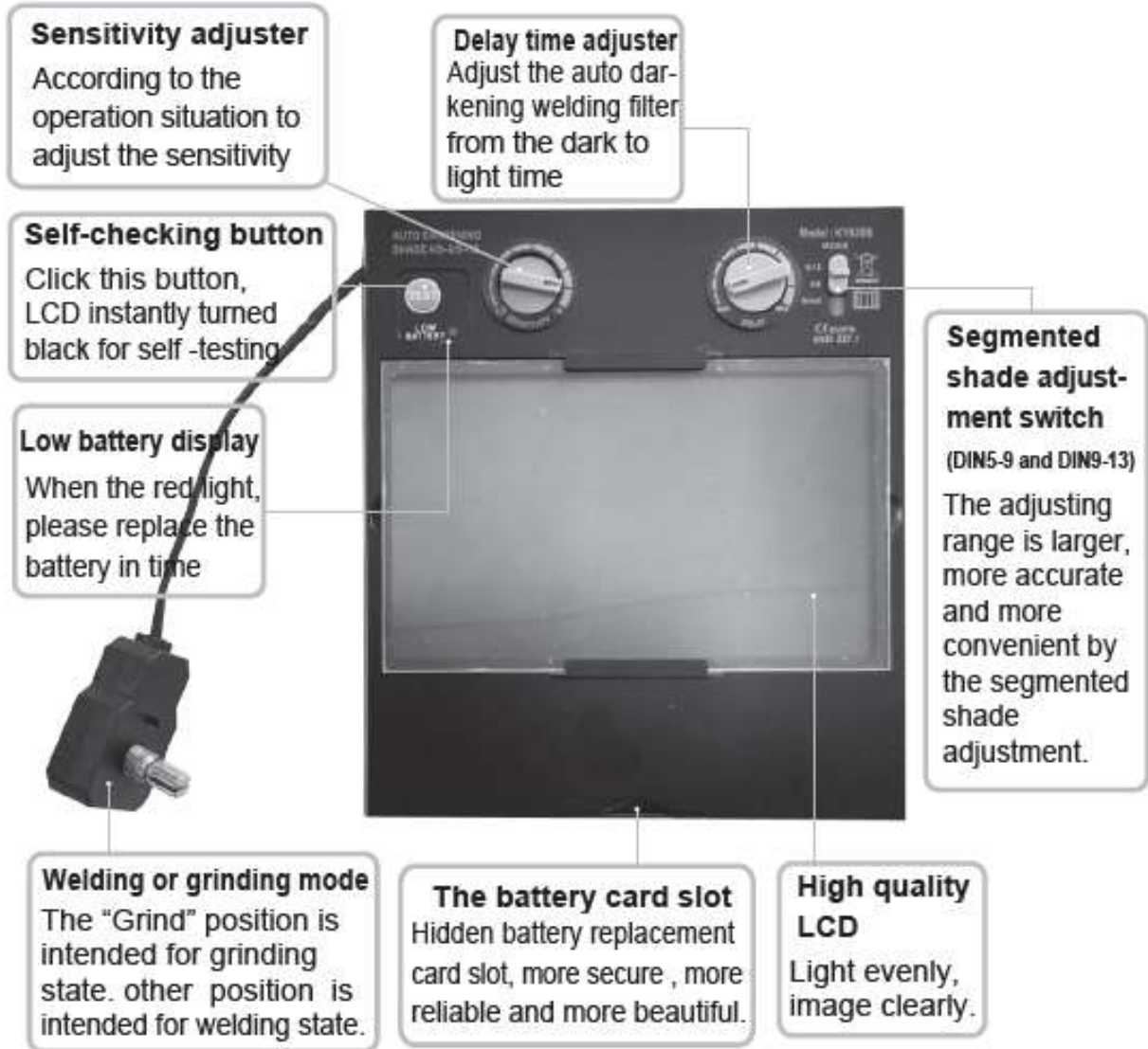
- Headband adjustment knob (refer to the picture introduction)
- Press the headband button, meanwhile turning the adjustment screw to select an appropriate diameter and fix it for the comfortable wear.

### 3. Picture Introduction





## User introduction of the auto darkening welding filter



## 4. Technical Parameters

- 1). Light states: DIN4
- 2). Dark states: DIN5-13 free adjustment
- 3). View Area: 103 X 62.5mm
- 4). Switching time( bright to dark) : < 1/10000 seconds (normal temperature conditions)
- 5). The return time ( dark to bright) : adjustable: 0.1 ~ 1.0 S
- 6). Sensitivity (welding based on current size) : adjustable: low/high
- 7). Battery: lithium battery + solar cells .
- 8). UV/IR protection: DIN16
- 9). Working temperature: -5°C ~ 55°C
- 10). Storage temperature: -20°C ~ 70°C
- 11). Masks materials: PP/PA
- 12). Weight: About 540G
- 13). Warranty : 1 year
- 14). life expectancy : 10 years

## 5. Matters Attention

- 1). Sensitivity Adjustment and Delay time adjustment have an great effect on the vision when working with welding helmet. Please make sure to select an appropriate angle according to your own habit.
- 2). The protection piece must be assembled to front and back of the filter lens,or the filter lens will be destroyed.
- 3). The protection piece should be provided by the manufacturer.
- 4). Any broken and scratching of the filter frame will affect the viewing angle and reduce the protective ability,Pls replace the frame once you find this matter .
- 5). The protection piece should be replaced if broken and scratching,Don't touch the lens with tough objects
- 6). Pls often replace the sweatband

## 6. Product Maintance

- 1). Pls use clean cotton cloth to clean the protection piece and frame.Don't use corrodent such as alcohol, gas,corrosive liquid,organic solvent,etc.
- 2). Pls store the product in the drying place. And preventing from water and damp.
- 3). Pls turn off the shade switch to reduce the power consumption when long time no using.

## 7. Product Diagram



- |                                |  |
|--------------------------------|--|
| 1.Filter protection piece      | 11.Sweat band                                |
| 2.Filter former frame          | 12.Positioning point for the segmental plate |
| 3.Filter                       | 13.Head band                                 |
| 4.Filter outer frame           | 14.Outer round gasket                        |
| 5.Sensitivity knob             | 15.Block nut                                 |
| 6.Delay knob                   | 16.Headband tightness fixed knob             |
| 7.Filter frame fixed frame     | 17. Headband tightness adjusting knob        |
| 8.Helmets                      | 18.Block nut                                 |
| 9. Shade knob                  | 19.Adjusting nut                             |
| 10.Segmental positioning plate | 20.Adjusting knob                            |